

SHAW

NEIGHBORHOOD NEWS

SPRING 2006

INSIDE: Tower Grove Park Farmers' Market • Center for Community Health Opens • "For-Sale" Properties Showcase • Neighborhood Plant Swap-and-Sale • Tower Grove Park Tennis Center • Coming Soon: Thurman Grill and Provisions • Dog Park News • News from SNIA

Jean Leible: Outstanding Shaw Contributor



More than twenty years of outstanding service to the Shaw Neighborhood came to an end with the death on Sunday, February

26th, 2006, of Florence "Jean" Leible. Mrs. Leible had suffered from tuberculosis in recent years; death was attributed to a heart attack. She was 72.

Mrs. Leible, a native St. Louisan, was active in both crime prevention and community policing and service to senior citizens in Shaw. She and Shaw resident Don Burrus organized the Shaw Mobile Patrol in 1983, in the hopes of providing citizen surveillance to supplement the work of the Police Department.

As Mobile Patrol Chairman, she recruited volunteers to drive their own cars through the neighborhood several hours each evening, and report to the police any instances of suspected criminal activity. Reporting was initially conducted by means of citizen band radios and later, as they became more common, cell phones. Mrs. Leible's late husband, Harold Leible, Sr., was among the first to take part; as years went on, many other Shaw residents would be part of the Mobile Patrol volunteer team.

Mrs. Leible, who was related to one-time 3rd District Captain Robert Oldani, also organized dinners and holiday parties to thank police management and patrol officers for their work in the community.

Alderman Steve Conway, long acquainted with Mrs. Leible, said she wanted to improve citizen awareness of the difficulties that police

face in their work, as well as improve police awareness of the needs and expectations of residents of the Shaw neighborhood.

"I'm certain that at some point, every captain of the 3rd District and many sergeants came to know Jean Leible and hear what she expected of them," Conway noted.

Among the civic recognitions she received was the FBI Director's Award, in 1993, for efforts to suppress drug dealing and criminal activities in Shaw. She also received the St. Louis Police Department Citizens' Award of Excellence and the 3rd District Police Citizens' Award. She was named Shaw Person of the Year on two separate occasions.

Alderman Conway noted that she also took the lead in helping other Shaw neighbors, especially seniors, in dealing with the City. "More than once, Jean would call me and see what kind of home repair or home security programs were available to her neighbors," Conway recalled. She was also co-chairman of the annual Operation Brightside clean-up in Shaw.

Leible was a member of the Ladies' Auxiliary of St. Margaret of Scotland Church. The funeral mass was conducted at St. Margaret of Scotland and interment was at Jefferson Barracks National Cemetery. Survivors include two sons, Harold "Jim" Leible of South St. Louis County and John Leible of St. Louis; a daughter, Deborah Schulze of St. Louis; a brother, Edward Jones of St. Louis; seven grandchildren and one great-grandchild.

Memorials in her honor may be made to Backstoppers, a group that supports families of fallen police and firefighters. Their address is 9811 South Hwy. 40 Drive, St. Louis, MO 63124

Plans for Art Fair Taking Shape

The fourteenth annual Historic Shaw Art Fair will take place on October 7th and 8th, and planning is well underway. Larry Weinles, a veteran volunteer for the art fair, is the new chairperson of the art fair committee. Larry's primary task is to serve as a liaison between the SNIA board, the art fair committee and the event coordinators.

In order to capture some of the early visitors to the Best of Missouri Marketplace, which opens at 7:00 a.m. on the same days, the art fair will open at 9:00 a.m. on the 7th and 10:00 a.m. on the 8th.

Last year's initial sale of wine and beer was successful. This year the sales area will be enhanced and made more "bistro-like." Plans are also being discussed to locate some entertainment at the Thurman entrance; to have a pre-event party at the Portfolio Gallery (located behind Powell Hall); to improve the art activity and student art area; and to increase the amount of advertising. A major goal is to increase the number of visitors from 8,000 to 10,000.

A committee of neighborhood volunteers will handle public relations for the art fair this year. Members include Sue Raney, Abby Davis, Matt Davis and Jennifer Hamlet. At this time a chairperson is needed for the Saturday night volunteer and artist party. If you are interested, please call 773-3935. Anyone wishing to become a member of the art fair committee can call the same number.

Next General Neighborhood Meeting is 7 p.m., Monday, May 1st
St. Margaret of Scotland Church basement, Flad at 39th Street – Everyone is Welcome!

SNIA GENERAL & BOARD MEETINGS

SNIA General

Membership Meetings **May 1, June 5, July 3, August 7, September 4**
7 p.m., St. Margaret of Scotland Church basement, Flad at 39th St., 771-3101

SNIA Board of Directors Meetings

May 15, June 19, July 17, Aug. 21, Sept. 18
7 p.m., Tyler Place Presbyterian Church basement, Spring and Russell, 771-3101

PROBLEM PROPERTIES COMMITTEE MEETINGS

Meetings for 2006
are as follows:

May 22, June 26, July 24, Aug. 28, Sept. 25
7 p.m., the SNIA office, 2211 39th Street. 771-3101

The first weekend
of June is
YARD SALE time
in Shaw.

Contact your block captain
to help organize your
block yard sale.

The Helping Hands Grant
applications are in.

Successful applications will be
selected at the May Board of
Directors meeting and will be
announced at the June general
membership meeting.

What is the Shaw Neighborhood Improvement Association?

The Shaw Neighborhood Improvement Association (SNIA) is a non-profit organization incorporated in 1975. The corporation is managed by an executive committee and governed by the Board of Directors. The Board of Directors is comprised of volunteer representatives from each block in the Shaw Neighborhood. This large network of block captains ensures that every voice is heard and every resident is represented.

The SNIA serves the residents of the Shaw neighborhood by providing information, facilitating discussion, and acting on solutions. General meetings provide monthly opportunities to personally interact with the Alderman, the 3rd District Police, the Neighborhood Stabilization Officer and SNIA officers, as well as to meet and greet other residents of the community.

Please join us in supporting our efforts to maintain and improve YOUR NEIGHBORHOOD. Please see membership form on page 9. Contributions are fully tax deductible.

Shaw Neighborhood Newsletter

is a quarterly publication that reaches the 3,500 households and businesses of Shaw. Published by the Shaw Neighborhood Improvement Association, the Shaw Newsletter features information about issues of concern to the neighborhood and upcoming city events.

Advertising Sizes, Rates & Discounts

- | | |
|---|--|
| <input type="checkbox"/> Full Page 7 7/8 x 10 1/8 | <input type="checkbox"/> 1/4 H 5 x 3 7/8 |
| <input type="checkbox"/> 1/2 V 5 x 8 | <input type="checkbox"/> 1/6 V 2 3/8 x 5 |
| <input type="checkbox"/> 1/2 H 7 7/8 x 5 | <input type="checkbox"/> 1/6 H 5 x 2 3/8 |
| <input type="checkbox"/> 1/3 Sq 5 x 5 | <input type="checkbox"/> 1/9 V 2 3/8 x 3 3/8 |
| <input type="checkbox"/> 1/3 V 2 3/8 x 10 1/8 | <input type="checkbox"/> 1/9 H 5 x 1 7/8 |

	Full-page	1/2	1/3	1/4	1/6	1/9
1x	\$275	\$145	\$105	\$85	\$60	\$40
4x	\$1,000	\$530	\$380	\$305	\$215	\$145

The 4x rate is a yearly fee and reflects a 10% discount over buying each issue separately. Further discounts are available to yearly advertisers for ads in the Historic Shaw Art

Fair (10,000 visitors) and Shaw House Tour (1,000 visitors) programs. For Program Advertising information please call **314-771-3101**.

Editorial and Ad Submission Deadline

Submissions for the next issue of *Shaw Neighborhood News* must be received by **July 1st, 2006**.

To submit an article, please contact editor Monte Abbott at 314-771-3101 or squidward008@hotmail.com. Copy in electronic format (floppy disk or CD) with hard copy may also be delivered to the SNIA office at 2211 S. 39th Street, St. Louis, MO 63110.

To submit an ad, please call 314-771-3101 for a packet with all specifications and contract for advertising.

A Fresh Alternative to the Market

Tower Grove Park to offer a Farmers' Market

Tower Grove Park and Barnraising Development, LLC have entered into agreement to present the Tower Grove Farmers' Market and Bazaar. On Saturdays' beginning May 13, 2006 through October 21, 2006 from 8:30 a.m. to 12:30 p.m. Fifteen vendors will offer a variety of locally grown products just west of the Pool Pavilion in the heart of the historic Park.

The Tower Grove Farmers' Market provides a fresh alternative for growers and producers of Missouri and Illinois agricultural commodities and other farm-related products, while providing an educational forum for consumers to learn the uses and benefits of quality, locally grown or prepared food products.

"This is more than just a farmers' market," says Patrick Horine of Tower Grove Farmers' Market and Bazaar. "This is a community supported and operated agricultural program that will offer something for everyone and, of course, there will be plenty of fresh, home-grown and home-made foods."

The Market, the first of its kind to be held in Tower Grove Park, is an exciting addition to the Park's landscape and already bustling activity. Bordered by seven South St. Louis

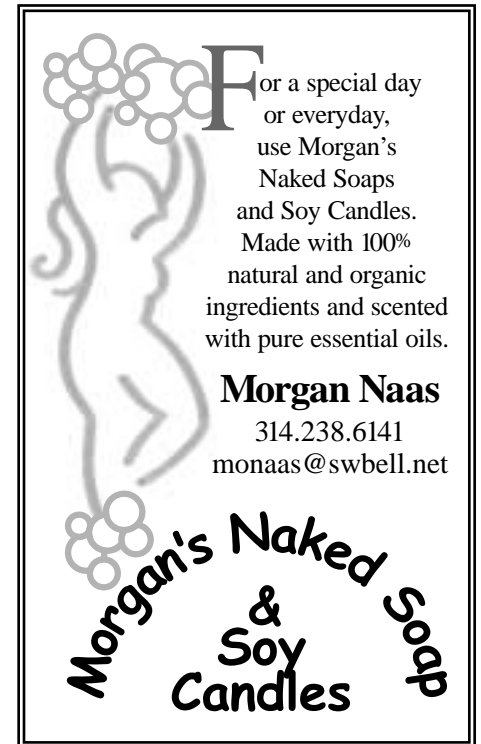
neighborhoods, Tower Grove Park is a keystone in the community, providing vital beauty and breathing space, cultural activities and recreational opportunities for the population adjacent to it, for greater St. Louis, and beyond. Over one million visitors walk, bike or drive through and enjoy the Park each year.

"We are looking forward to this collaboration with Tower Grove Market and Bazaar, and to further expanding the Park's offerings to our constituents," says Park Director John Karel. "This is another example of the civic health our founder, Henry Shaw, had in mind when he created Tower Grove Park."

A special kick-off event will be held on Saturday, May 13, 2006 just west of the Pool Pavilion. The event will feature music entertainment, fitness activities, arts activities for youth, and guest speakers. Mayor Slay and Representative Russ Carnahan have been invited to speak between 11:00 and 12:00. The event will take place from 8:30 a.m. to 3:00 p.m. For more information about the event, or how you can participate, visit www.tgmarket.org or e-mail contact@tgmarket.org.

The SNIA board of directors recently voted to provide a \$500 sponsorship

to the Market. In return our neighborhood will be featured on advertising signage at the Market. Be on the lookout for the SNIA signs.



For a special day or everyday, use Morgan's Naked Soaps and Soy Candles. Made with 100% natural and organic ingredients and scented with pure essential oils.

Morgan Naas
314.238.6141
monaas@swbell.net

Morgan's Naked Soaps & Soy Candles

Shakespeare Commemorated at Tower Grove Park

The 442nd anniversary of the birth of William Shakespeare will be commemorated at Tower Grove Park on Sunday, April 23, 2006 at 1 PM. A wreath will be placed at the Shakespeare statue located on the Center Cross drive, in the center of the historic Victorian-style Park. Participants will include representatives of the Park, the St. Louis chapter of the English Speaking Union, and other Shakespeare related organizations.

William Shakespeare is considered one of the most important shapers of the English language, and one of the great interpreters of the human spirit.

The bronze statue in the Park, donated by Henry Shaw in 1878 and sculpted in Munich Germany by Frederick Von Miller, is considered one of the most significant representations of Shakespeare in North America.

A brief recital from Shakespeare's writings will be presented by a participant from the English Speaking Union's National Shakespeare Competition. This will be followed by light refreshments at the nearby Lily Pond Shelter. For more information about the event, visit www.towergrovepark.org or email rzolper@towergrovepark.org



LOREN JENKS
Real Estate Broker-Salesperson
City Enthusiast
314 308 3069
lorenjenks@hotmail.com

Mary King and Associates
2100 S. 9th St, St Louis MO 63104
314 776 6279

Center for Community Health Now Open



In the summer of 2005, The Institute of American Acupuncture & Life Medicine (IAALM), opened the Center for Community Health in South City. The center is located at 3735 Connecticut, at the northeast corner of Connecticut and Spring.

IAALM is a not-for-profit 501 c (3) education and service organization founded here in St. Louis in 2002. It was founded for the expressed purposes of:

1. Providing the highest quality of acupuncture and other aspects of traditional oriental medicine to the underserved and unserved members of our society.
2. Educating consumers and health care providers through the wisdom and knowledge of the ancient Far East health care systems.

The IAALM opened its first Center for Community Health in Creve Coeur in 2002, and has provided over 1,000 treatments to hundreds of people unable to access professional acupuncture health care and, in some cases, any health care at all. The health care provided through IAALM addresses all forms of joint/muscle pain, allergies, chronic fatigue, arthritis, cardiovascular issues, reproductive issues, digestive problems, addictions, sleep disorders, skin problems, stress, anxiety, and

many other conditions. In addition to the clinical services, the Institute has conducted nutrition, stress management and well-baby clinics and workshops.

Additional seminars and workshops will be conducted this spring and summer.

May 13th, 2006 1-5 PM **"Healing Touch for Couples"**

Learn to both give and receive with a partner or friend, helping to address stress & tension.

May 27th, 2006 1-4 PM **"Self Health Care"**

Foods, recipes, supplements for family health prevention & restoration.

June 24th & 25th, 2006 **"Pediatric Healthcare"**

"Needleless Acupuncture"- Shonishin, Te a Te and Nutritional guidance addressing chronic conditions in children as well as preventative healthcare. This workshop is designed for licensed healthcare professionals.

July 15th & 16th, 2006 **"Hand Healing Spirit"**

Study the "way of the Hands" to guide energy (ki) back to optimal function utilizing Anma & Shiatsu as related to Meridian Therapy. This workshop is designed for licensed healthcare professionals.

Center for Community Health in South City schedule:

Wednesdays: 8:30 AM-6:00 PM

Last Friday of each month: 8:30 AM-1:00 PM

2nd Saturday of each month: 9:00 AM-3:00 PM

For information, scheduling, and a complete listing of upcoming seminars/workshops, please call the Institute of American Acupuncture & Life Medicine at (314)991-6044 or visit them at www.IAALM.org

While IAALM is in existence to serve those who are not served, people will not be turned away because of their ability to pay. IAALM accepts all peoples. Fees are always based on a sliding scale determined by appropriate documentation such as a tax return.

" SHAW ON SHOW" A Showcase of For-Sale Properties

The Historic Shaw neighborhood in its springtime beauty is opening its doors and welcoming homebuyers on Sunday, May 21st, as St. Margaret Housing Corporation hosts its 25th annual "Shaw On Show", a free self-guided tour of for-sale properties from 1:00 to 4:00 p.m.

The newly opened Thurman Grill & Provisions, located on the northeast corner of Thurman and Shenandoah, will serve as the starting point for this year's event. Representatives from St. Margaret Housing Corporation and local lending institutions will be available to assist homebuyers by providing information on the loan products,

resources, services, schools and amenities available in the Shaw neighborhood.

Homebuyers will be offered a variety of styles and prices. Booklets listing the for-sale properties by address, with brief descriptions, prices and realtors will be available at Thurman Grill & Provisions. Homebuyers can use the booklet as a guide in selecting the properties to view that best suit their needs.

The Shaw neighborhood, one of the oldest historic districts, is nestled between two of the city's jewels, Missouri Botanical Garden and Tower Grove Park. Shaw's boundaries are Interstate 44 on the north,

Magnolia Avenue on the south, Grand Boulevard on the east and Tower Grove Avenue on the west.

"Shaw On Show" is coordinated by St. Margaret Housing Corporation, a non-profit, non-denominational organization that works to improve the quality of life in the Shaw neighborhood by addressing housing related issues. "Shaw On Show" is sponsored by Bank of America, Commerce Bank, Southwest Bank and US Bank.

For more information about the Shaw neighborhood call St. Margaret Housing Corporation at 314-771-4170.

Neighborhood Plant Swap and Sale – May 13th

The 4th annual Plant Swap & Sale will be held on Saturday, May 13, from 11 a.m. to 1 p.m. at the Dorothy Park Garden, at Shenandoah and Thurman Avenues.

The event is sponsored by the Historic Shaw Garden Club, a volunteer group of Shaw neighbors interested in plants, backyard and community gardening, and neighborhood beautification.

The Swap:

We will accept donations of your unwanted or surplus plants. We will accept both garden and house plants, but please – no orange daylilies! In exchange for your plants you will receive a coupon for an equal number of donated plants.

The Sale:

If you have only cash, you're welcome to purchase from the available selection.

We're all looking forward to a great Swap and Sale. Stop by and visit with us and enjoy the Spring colors in beautiful Dorothy Park Garden!

S. F. SHANNON
REAL ESTATE
MANAGEMENT
LLC

RACHEL A. PRESLEY

PO Box 4675
St. Louis, MO 63108

Managing multifamily property
exclusively in the City of St. Louis

314-367-1106

Visit us at: www.sfshannon.com

May 7th Bird Fair

Caged Birds & Bird Supplies Sold

Stratford Inn, 800 So. Highway Drive, Fenton, Missouri

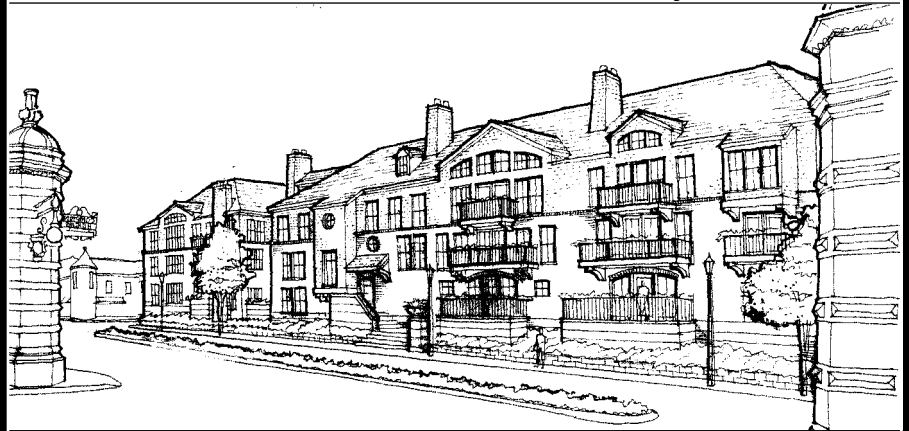
Hours: 10:00 AM – 5:00 PM • Admission: \$3

For more information: st.louis.canaries.limited@hotmail.com
Dianne Groves: 314-576-4136 • Morgan Clough: 314-865-4790



New Construction On Historic South Grand

One-level Condominiums & Two-&-a-half story Townhomes



Features

- Garage parking
- Integrated sound reduction package
- Elevator
- Private courtyard with pool
- Spacious balconies
- 10 year tax abatement

Finishes

- Upgraded finishes with options
- Gas fireplace
- Gourmet kitchen
- Luxury bathrooms
- 9 foot ceilings
- High-speed internet access

Now Taking Reservations!
Pre-Construction Pricing Starting At \$230,000

For further information contact:

Judy Korn
314-283-0572
Remax Properties West

RE/MAX

Liz Zempel
314-809-4600



WWW.COMPTONGATECONDOS.COM

Tower Grove Park Tennis Center, New Players Always Welcome

Greg Gobberdiel

Whether you have played tennis in the past, currently play or would like to learn, Tower Grove Park Tennis Center (TGPTC) offers opportunities to improve, maintain or learn the game. Tennis is a sport that you can enjoy your entire life, and one that makes exercise a joy. It's a social sport too where friendships are created and sustained.

About Tower Grove Park Tennis Center

Located just west of Center Drive on the Park's north side, the TGPTC has twelve hard courts and three grass courts. The grass courts were built in 1961, and are the only ones in the midwest. Since its inception, TGPTC has maintained the player-friendly tradition of pick-up games. That is, show up and you can usually find someone willing to hit, no matter your level of play. This tradition is unique among tennis centers, public and private, and encourages a friendly comradery among permit holders and visitors alike.

Though Tower Grove Park is a public park, there is a fee to use the courts. The fees allow for regular maintenance of the tennis facility, free lights in the front courts and a club pro who manages

the courts and offers lessons. He is also responsible for scheduling activities, and can arrange for instruction by other area pros. Throughout the year, there are scheduled interclub mixers, clinics and competitive tournaments, as well as summer social activities.

Annual permit holders represent the entire metro area and are as diverse a bunch as can be had. My own experience includes hitting with players native to Croatia, Argentina, France, China, England and of course the US. The fee for the 2006 individual hard court annual permit is \$70 and \$30 for senior, junior and college permits, a slight reduction from last year. If you only wish to try your hand for a few days, a daily pass is \$4 per person, or \$6 for two players. The use of the practice wall is free. Annual permit holders receive unlimited use of the hard courts, use of the club house and additional perks. An annual permit is good from April 1 to April 1 the following year. See sidebar for all fee levels.

Joe Kovar Returns as Club Pro

This year's club pro is Joe Kovar. Joe served sixteen consecutive years as the club pro in the 1970s and 1980s, and has

been a long-time TGPTC player. His goal is to raise the number of season permit holders and encourage area residents to participate. Joe is also investigating greater use of the grass courts. The grass courts traditionally have had limited use due to their higher maintenance needs.

Major improvements this year include resurfacing the front courts (scheduled for May) and club house repairs – a new roof and painting. The improved lighting in the front courts was added in 2004. The lights are set on a timer for evening use till 10 pm, but they are turned off earlier, if no players are present, to conserve energy.

Sponsor a Child

To encourage junior players of all skill levels, consider sponsoring a child by buying an annual permit and equipping a youngster with a racket, a can of balls and tennis shoes. Regular clinics occur on Saturday mornings for juniors from 9-10 am, May 6 to September 2. Lessons can also be arranged to give them a head start on a lifelong activity.

To receive more information call Joe Kovar at the Tower Grove Park Tennis Center Club House, 314-771-7776, or stop by the TGPTC and pickup their brochure.

2006 Event Calendar

April 1	Opening season
May 2/4	Senior Mixer startup
May 3	Adult Mixer startup
May 6	Adult Clinic startup
May 6	High School Clinic startup
May 6	Junior Clinic startup
May 17	USTA Senior League
June 3-4	TGP Open M/W Singles Championship (USTA Certified)
June 10	Super Eight
Aug. 26/27	TGP Open Grass Doubles Championship (USTA Certified)
September	Sign up for winter programs

Non-Member Daily Rates

All day pass:	
One player	\$4.00
Two players	\$6.00

Hard Courts

Annual Membership Rates

Individual	\$70.00
Senior	\$30.00 (55 and over)
Family	\$100.00
College	\$30.00 (18-23 valid school I.D.)
Junior	\$30.00
Corporate- per person	
(5-10 Employees)	\$60.00
(11-20 Employees)	\$50.00
(21+ Employees)	\$40.00

Hard Court Memberships Include:

- Unlimited use of 12 lighted tennis courts
- In season access to grass courts
- Access to air-conditioned clubhouse
- Access to locker facilities
- Multi-faceted drop-in and pickup tennis game programs

- Club tournaments
- Ladder leagues
- Interclub
- 3 guest passes
- Social events
- Reduced rates for all age programs
- Off season (Nov-Mar) programs with access to courts and clubhouse

Grass Courts

The grass courts have instilled a sense of tradition at Tower Grove since 1961. Many world-class players have used our grass courts to prepare for Wimbledon, including Jimmy Connors and the Flach brothers. Every year we get closer to our goal of creating a grass court facility worthy of hosting national tournaments. We continue to seek much needed funding to realize our vision. If you would like to make a tax deductible donation please contact us at 314-771-7776.

Thurman Grill and Provisions: A Restaurant of Star Proportions

Susan Raney

It's another mundane Monday, and you're staring at the stove thinking, "What would Rod Stewart be having for dinner tonight?" Now you have the opportunity to eat like the stars! I can just hear you, "What? Pink Floyd and I have something in common?" The answer could be yes!

On May 8th, 2006 Thurman Grill and Provisions debuts with restaurateurs Larry Weinles and Jeff Cochrane cooking of some of their favorite and best received dishes. Weinles is a Shaw resident and owner of Belly Busters Catering. Weinles and Cochrane have worked in upscale catering for over 25 years primarily serving the entertainment industry. From Frank Sinatra to Metallica, they've satisfied the palates of a wide range of entertainment toppers. Those culinary skills will now be available to you.

Thurman Grill and Provisions will have many pots going at once – think New York deli meets Los Angeles café. A full service restaurant, Thurman Grill and Provisions will offer a number of entrees including chicken chasseur, chicken piccata, pork loin and roast sirloin. Seafood entrees include tuna with a wasabi sauce, salmon, shrimp and scallops. Vegetarians will enjoy a number of items including vegetable chow fong and eggplant tandoori. The menu will also feature soups and salads (try Weinles' signature Caesar salad with his homemade dressing).

Companion breads will round out your meal.

For lighter fare, try one of the hot or cold sandwiches. Pastrami, prosciutto, corned beef and numerous other deli meats and cheeses, many from Volpi's on the Hill, will be available. Gus' Pretzels, a nice compliment to a soup or salad, are also on the menu. Deli items will also be available for take out, so go by and pick up a pound of first class pastrami for that Dagwood sandwich you like to eat at midnight.

Catering to those of us who like a little Red with our Roast, (a liquor license is in the works and should be available by June), a selection of wines and beers will be offered to accompany meals. A Mimosa of champagne and fresh juice is a wonderful way to add spirit to brunch. Of course, beer and Gus's pretzels is the perfect combination for a warm early summer afternoon.

Of course, my biggest concern is the dessert case. This aspect of the operation has not yet been finalized but Weinles does assure us there will be chocolate in some form. Whew!

Through the years Weinles and Cochrane have developed a few specialty items that enhance their dishes, accompaniments such as vinegars, mustards and hot sauces. In addition to being used as ingredients of restaurant fare, these items will also be for sale by the bottle. One Bistro best is a hot sauce called "The Mex", so good Weinles has had to ship it to Texas to keep Billy Gibbons and the late Stevie Ray Vaughn in good supply. To round out the diversity of flavors, Hispanic sodas will also be available. To satisfy Weinles' quest for half and half for his coffee, a regular stash of it will be in stock.

Thurman Grill and Provisions is about gourmet food but it is also about bringing people together over a great meal. Nothing goes better with food than good company in enjoyable surroundings. To enhance the atmosphere and make your dining experience excellent, Weinles and Cochrane plan to have regularly scheduled musical performances. Jazz brunches on Saturdays and Sundays, as well as Friday and/or Saturday evening entertainment will make Thurman Grill and Provisions the happening place to be.

Opening this restaurant came as an epiphany to Weinles, who has lived in Shaw for six years. For him, it's about putting his efforts into a neighborhood he loves and building the next chapter in his life. It took a bit of prodding from neighborhood leaders, but as he tells it, one day he woke up and thought "Yeah, I'm gonna do it. It's the right time." While for the next few years he and Cochrane will continue to cook for the stars, they want to spend the future cooking for you.

So instead of staring blankly at that stove, you now have a better option. You could be sitting on the patio of Thurman Grill and Provisions, enjoying a delicious meal, thinking "It's good for Rod Stewart, and it's good for me."

Bon Appetite!

Basic Info for Thurman Grill and Provisions:

Debut Date: May 8, 2006

Address: 4069 Shenandoah (at the corner of Thurman and Shenandoah)

Days Open: Daily for Breakfast, Lunch and Dinner (Sundays-dinner not yet confirmed)


Hours: Monday-Thursday: 7 a.m. - 9 p.m.
Friday : 7 a.m. – 11 p.m.
Saturday: 9 a.m. – 11 p.m. with buffet brunch;
Sunday: hours to be decided, buffet brunch for sure at this time.

Options: Dine-in, patio will be open as weather permits: Spring, Summer and Fall.

Curbside Take-Out service: call ahead to order. On arrival, call on your cell phone and the order will be brought out to you.

Payment methods: Cash or credit card (Larry and Jeff have many autographs—they'd like to have yours too.)

*Drawings
of Homes*



CATHY C. JOHNSON

* Color, Pen & Ink *

314.965.8538

Dogs Spring into Action

Misha Raney (typed by Susan Raney)

The weather is warming up and the dogs of Shaw Dog Park are on the move. Spring is a great time of year for dog play - cool enough to still enjoy chasing each other and running in circles, warm enough that our owners don't freeze while standing outside watching us,

The Shaw Dog Park is doing very well with 215 dogs. Neighbors meet each other, and we are drawing dogs from Illinois as well as the St. Louis county areas. It's a real mix of people and pooches.

The dogpark has needed some maintenance this year. The lock on the gate has not worked well for some time. Finally got some answers to this, and the fence company made a new housing for the lock system. By the time you catch this paper the lock should be working again.

For the past 2 years we have used the Horticultural Jobs Partnership to cut our

grass and spread mulch. They employed people with mental retardation or disabilities and we were happy to use their services. This year they had to close their doors and so we needed to find a new landscaping company. Brake Landscaping, owned by Shaw's own Robert Brake, will be our new groundskeepers. Welcome Brake Landscaping to the Shaw Dog Park.

Shaw Dog Park continues to be a place for social interaction, whether it be dogs to dogs, people to people, or dogs to people - it's all a winning combination. We continue to be a model for other dogparks in the area and get calls from surrounding neighborhoods who would like their own dogpark.

To join the Shaw Dog Park go to www.shawdogpark.org. From there you can see the rules and regulations, as well as the membership requirements. You can

print off the application and waiver of liability from the "membership" heading. Read, fill out and sign both. Attach a copy of your proof of rabies vaccination, and enclose a check for the proper amount. Send it to The Shaw Neighborhood Improvement Association at 2211 South 39th St., 63110, Write DOGPARK under the address.

If you can not use a computer to obtain the paperwork, you can check the mailbox to the left of the entry gate, and get the proper forms out of it or call the Shaw Neighborhood Improvement Association at 771-3101 and leave a message. Some human will get back to you to assist with the paperwork. All dogs are welcome, and we wag our tails when we meet new people too. Come by and watch us play, as we spring into action!



Southwest Bank
The Name To Count On Since 1920

2301 S. Kingshighway (314) 776-5200	4210 S. Kingshighway (314) 352-5797
--	--

www.mySouthwestBank.com

WEST COUNTY: (314) 543-3300	CRESTWOOD: (314) 842-5455
THE HILL: (314) 776-5200	CONCORD VILLAGE: (314) 842-2265
SOUTHTOWN: (314) 352-5797	BELLEVILLE: (618) 233-9288
CLAYTON: (314) 727-7070	CREVE COEUR: (314) 205-3400

 Member FDIC ©2005 Southwest Bank of St. Louis

News from SNIA cont. from page 10

SNIA office (771-3101) and leave a message with your name, the name of your employer, and a contact person and we will do the rest. Each additional contact increases our chances of finding sponsors. Thanks!

- Many thanks to Sue Raney, Abby Davis, Matt Davis, and Jennifer Hamlet who have volunteered their time and expertise to work on Public Relations for the Art Fair this year! Shaw is lucky to have such talented, hard-working, and generous people.
- A great big thank you to the following volunteers: Shannon Brasher, 2005 Historic Shaw Art Fair Chair, for all of her hard work and dedication, helping to make the Art Fair a huge success! She is stepping down this year, but hopes to remain involved. Lucky for us, Larry Weinles has stepped in to Chair the 2006 Historic Shaw Art Fair. Penny Kennedy, who has done an incredible job of coordinating volunteers for the Art Fair for the past four years, has handed off the job of Volunteer Coordinator to John Quartuccio. Penny will continue to be

involved with the Art Fair Committee this year. We really appreciate the tremendous commitment of time and energy that these folks give to Shaw.

- SNIA has hired Development Consultant Julia Hart to seek sponsorships and grants to support the 2006 Historic Shaw Art Fair and Shaw House Tour. Greg Gobberdiel and Ken Cohen of Gobberdiel Graphic Design will continue to be the Event Coordinators for the Art Fair this year. We couldn't ask for better people to work with to create another successful Art Fair!

Important Phone Numbers

Alderman Steve Conway	773-4329	Missouri Sen. Pat Dougherty	772-1948
Alley Light Trouble	342-1000	Neighborhood Stabilization Officer	772-3925
Anonymous Drug, Gang, Homicide Police Hotline	241-COPS	Operation Brightside	781-4556
Board of Alderman	622-3287	Police (non-emergency)	231-1212
Building Inspection	622-4671	Shaw Neighborhood Improvement Association	771-3101
Citizens Service Bureau	622-4800	St. Margaret Housing Corp	771-4170
Derelect Vehicles	444-0130	Third District Police	444-0100
Garden District	776-6746		
Humane Society	647-8800		

Shaw Neighborhood Improvement Association MEMBERSHIP APPLICATION

Please Join Your Neighborhood Association
Your participation is important

Name _____

Address _____

City _____ State _____ Zip _____

Phone _____

Email _____

Yearly Membership Levels

- | | | |
|--|---|---|
| <input type="checkbox"/> Senior/Low-Income Individual \$4.00 | <input type="checkbox"/> Family \$12.50 | Make checks payable to the SNIA |
| <input type="checkbox"/> Individual \$7.50 | <input type="checkbox"/> Business \$15 | |
| <input type="checkbox"/> Senior/Low-Income Family \$7 | <input type="checkbox"/> Sponsor \$25 | Please mail to: SNIA
2211 South 39th Street
St. Louis, MO 63110 |
| | <input type="checkbox"/> Other \$ _____ | |

Membership fees and contributions are tax deductible.

shawsgallery.com

- Residential apartments available
- Event space rentals

TRANSformation
MASSAGE THERAPY
636-578-4905

314.304.1539

**SHAW'S
GALLERY**

News from SNIA

Jenny Gerstner

Don't Miss the Fun in June!

Mark your calendars! Our SNIA General Meeting on Monday June 5th is one you won't want to miss. There will be food, drinks, an Award Ceremony recognizing the 2005 Shaw Neighborhood Award winners, and the announcement of the Helping Hands Grants recipients. Bring a neighbor and join in the fun. The meeting begins at 7:00 pm in St. Margaret's Church Basement at 39th and Flad. See you there!

Block Unit News

Thanks to Stacy Davis, Chair of the Block Liaison Committee, and Elisia Cohen, Secretary of SNIA, who spent many hours on the phone tracking down and recruiting Block Captains throughout Shaw over the past couple of months. They have created an updated Block Captain list and have worked hard to improve communications between SNIA and the Block Captains. They organized a well-attended Block Captain Appreciation Brunch and Training on Saturday, March 4th. Our appreciation goes out to Problem Property

Chair Susan Turk, Alderman Steve Conway, NSO Michelle Boston-David, and 4000 Parker Ave. Block Captain Bev Dougherty for giving up a Saturday morning to present to the group. Thanks also to the many Block Captains who attended the meeting. At the end of the Training, we decided to put together "Welcome Packets" for Block Captains to distribute to new residents on their blocks. We will need some volunteers to help put these packets together. Interested? Please call the SNIA office (771-3101) to help with this effort.

Helping Hands Grants

As the Shaw Neighborhood Improvement Association is committed to the betterment of Shaw, we are announcing the return of the "Shaw Helping Hands" grant program to assist those in our neighborhood who share that vision and are taking an active part in making it a reality. Past recipients of the grant have addressed the needs of artistic, educational, environmental, children's welfare and civic groups in the neighborhood. The SNIA Board recently

approved the use of \$10,000 of the SNIA budget for Helping Hands Grants this year. The Grant recipients will be announced at the June SNIA General Meeting.

Shaw Neighborhood Awards

Coming soon...the return of the Shaw Neighborhood Awards. For the past two months, we have been collecting nominations for 2005 Person of the Year, Developer/Landlord of the Year, Public Servant of the Year, and a recipient of the Shaw Lifetime Achievement Award. The winners will be recognized at the June SNIA General Meeting. Be sure to join in the fun as we show our appreciation for some of our neighborhood's unsung heroes.

Art Fair News

- ATTENTION SHAW RESIDENTS! We need YOUR HELP. We are looking for additional sponsors for the 2006 Historic Shaw Art Fair. If you work for a company that sponsors community events or offers grants, please call the

continued on page 9